

INTech seals

KP 155

● **Operational Conditions:**

Temperature: -20°C to +150°C

Pressure: ≤ 1.0MPa

Speed: ≤ 10m/s

● **Materials:**

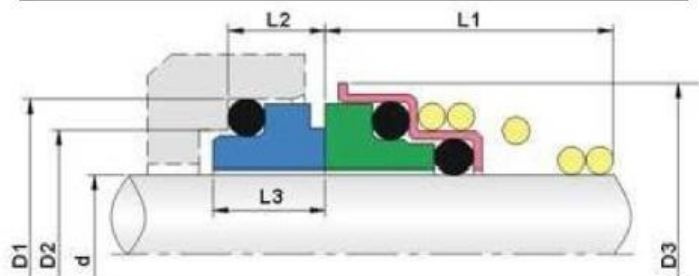
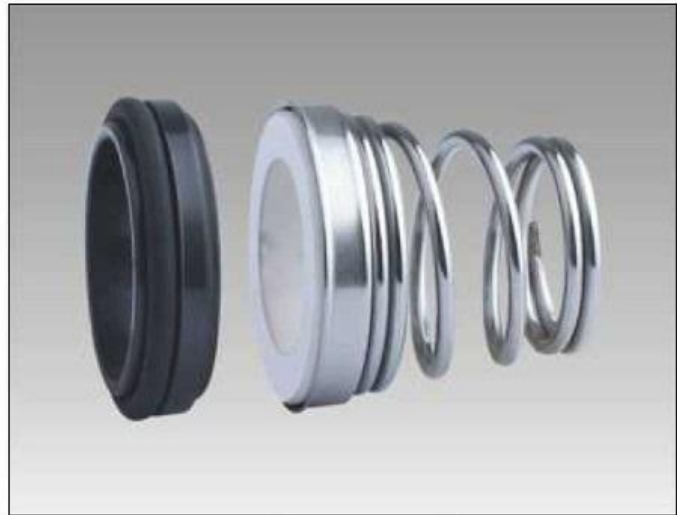
Stationary Ring: B5, B, Q2

Rotary Ring: V1, Q2

Secondary Seal: P, E, V

Spring and Metal Parts: F, G

● **Applications:** Clean water, sewage water, oil and other moderately corrosive fluids.



155

Metric sizes	d	D3	D2	D1	L1	L2	L3
10	10	20	14.0	18.1	15	5.5	7.0
11	11	22	16.5	20.6	18	5.5	7.0
12	12	22	16.5	20.6	18	5.5	7.0
13	13	25	19.0	23.1	22	6.0	7.5
14	14	25	19.0	23.1	22	6.0	7.5
15	15	29	21.0	26.9	22	7.0	9.2
16	16	29	21.0	26.9	23	7.0	9.2
17	17	29	21.0	26.9	23	7.0	9.2
18	18	33	25.0	30.9	24	8.0	10.0
19	19	33	25.0	30.9	25	8.0	10.0
20	20	33	25.0	30.9	25	8.0	10.0
21	21	38	30.0	35.4	25	8.0	10.0
22	22	38	30.0	35.4	25	8.0	10.0
23	23	38	30.0	35.4	27	8.0	10.0
24	24	38	30.0	35.4	27	8.0	10.0
25	25	40	33.0	38.2	27	8.5	10.0
28	28	46	38.0	43.3	29	9.0	11.0
29	29	46	38.0	43.3	30	9.0	11.0
30	30	46	38.0	43.3	30	9.0	11.0
32	32	46	38.0	43.3	30	9.0	11.0
33	33	48	45.0	53.5	39	11.5	13.0
35	35	50	45.0	53.5	39	11.5	13.0
38	38	56	52.0	60.5	39	11.5	13.0
40	40	58	52.0	60.5	39	11.5	13.0